

## International Blue Cross: KEY FACTS

### 1. Blue Cross Heritage

The Blue Cross was founded in 1877 in Geneva, Switzerland, by Pastor Louis-Lucien Rochat. Soon after, Blue Cross societies emerged in different parts of Switzerland, in Belgium, France, Germany and the Netherlands. This then led to the foundation of the International Federation of the Blue Cross (IFBC) in 1886. In 1906, the first Blue Cross society outside Europe was founded in Ghana, Africa, and more recently societies have been founded in numerous other African, Latin American, and Asian countries.

The Blue Cross is a health development organisation of professionals – employees and volunteers – dedicated to caring for people who suffer from alcohol and/or drug dependence. It is an organisation with a heart and has its roots in charity.

### 2. Blue Cross Distinctiveness

Blue Cross employees and volunteers are guided by professional ethics and the Christian values of respect, dignity, solidarity, inclusiveness, and care for others.

The Blue Cross presence is offered without discrimination or judgement. Blue Cross practitioners respect and work with everyone – regardless of culture or tradition, religion, social or geographical origin - and they are deeply connected with the local communities with whom they work.

Over time, the Blue Cross approach has developed into what can be best described as *integrated* and *holistic*. Its approach is not only based on clinical research and practice, but also on the Blue Cross’s own experience acquired in the course of many years. Today, the Blue Cross incorporates into all its care and therapy the physical, educational, psychological, and social aspects of a person’s life, as well as its spiritual dimensions.

### 3. Blue Cross Organisations around the World

Today, national Blue Cross organisations are present in 43 countries around the world.

#### EUROPE

Austria	Faroe Islands	Latvia	Russia
Belgium	Finland	Norway (Alcohol Policy)	Serbia
Czech Republic (Counselling and Aftercare)	France	Poland	Sweden
Denmark	Germany	Portugal	Switzerland
	Hungary	Romania	Ukraine

#### ASIA

India  
Japan

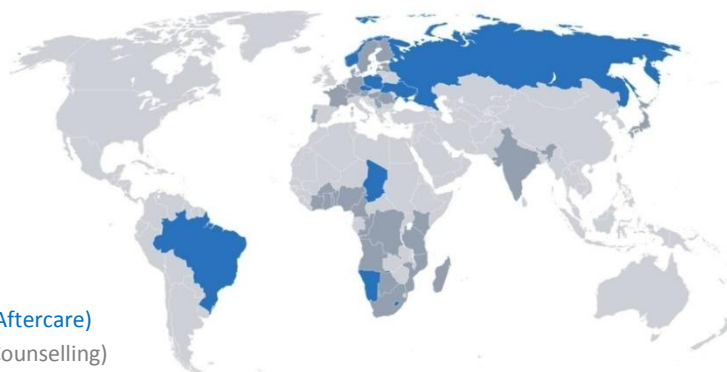
#### SOUTH AMERICA

Brazil (Aftercare)  
Chile (Counselling)

#### AFRICA

Angola	Chad (Prevention)	Kenya (Rehabilitation)	Nigeria
Benin	Republic of Congo (Prevention)	Lesotho (Prevention – “International Child Development Programme”)	South Africa
Botswana	Dem. Republic of Congo	Madagascar	Tanzania
Burkina Faso	Ghana	Mozambique	Togo
Cameroon	Ivory Coast	Namibia (Prevention)	

■ Member Organisations  
■ Member Organisations  
Implementing IBC Projects  
See [www.ifbc.info](http://www.ifbc.info)

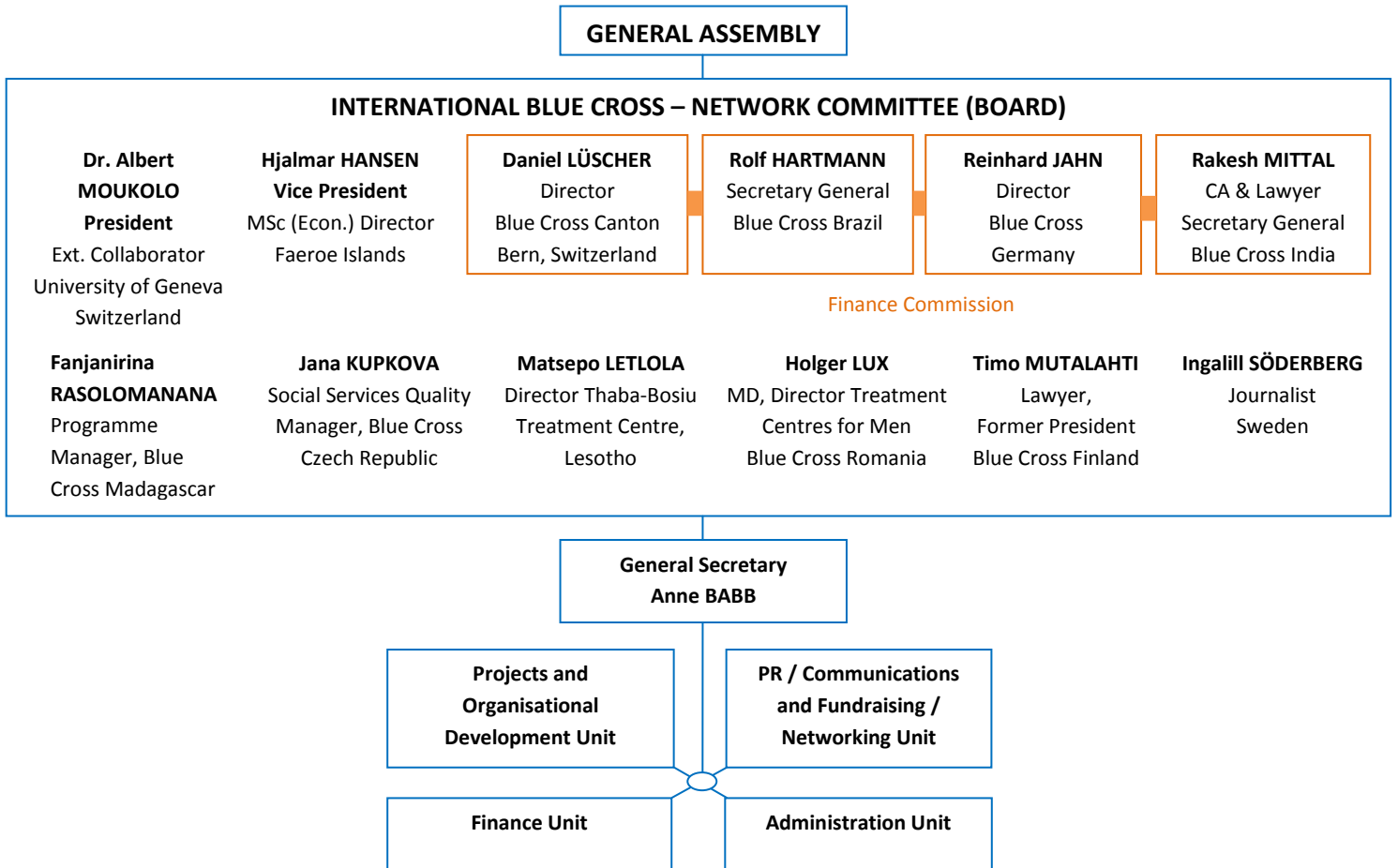


#### 4. International Blue Cross

The International Blue Cross is a non-governmental umbrella organisation that brings together the national Blue Cross organisations – called member organisations – into one body. It has a governing board – called the Network Committee – and a secretariat, based in Bern, Switzerland, that coordinates the work of the member organisations around the world.

The Blue Cross has a significant and challenging mandate to mobilise resources and build awareness of the negative effects of alcohol and drug misuse, and to provide support for prevention, treatment, and aftercare to those harmed by alcohol and drugs. It is built on voluntary membership and funded by donations in order to carry out its activities.

#### Organisational Diagram



#### International Blue Cross

Gesellschaftsstrasse 78  
3012 Bern  
Switzerland

Tel. + 41 31 301 98 04; Fax + 41 31 301 98 05

E-Mail [office@ifbc.info](mailto:office@ifbc.info)

You may find detailed information about our organisation and current projects on the IFBC website:

<http://www.ifbc.info/>